



RZR 170 Front Bumper - Rigid Mount

Polaris RZR 170 | 2009+

Part #: 5401340

Rev. 021519

491 W. Garfield Ave., Coldwater, MI 49036 · Phone: 517-278-7768

E-mail: sales-rtpro@ridefox.com

SAFETY WARNING

RT Pro UTV recommends this system be installed by a professional technician. In addition to these instructions, professional knowledge of disassembly/ reassembly procedures and post installation checks must be known.

WHY BUY RT PRO UTV

Great off-road driving and racing comes with having the most rugged and durable machine in the pack.

RT Pro UTV performance enhancing products will make your off-road machine stronger, tougher and safer so you can have more fun and less breakdowns.

For over a decade, RT Pro UTV staff have been taking brand new UTVs and driving them to their breaking point. When they bend, break or falter, we take them back to shop and create a fix that stops the problem from happening again.

There is no other company in the industry that puts more thought, engineering and design innovation into their products than we do. Our team is made up of off-road racers, mechanical engineers and talented fabricators who live and breathe all things motorsport. Above all, we share a passion for innovation, quality construction and getting things right.

All of our products are designed for assembly by weekend warriors with normal garage tools and the occasional spot-weld. Assembly directions are complete and thorough.

Remember, when you buy a RT Pro UTV product for your UTV, all of the parts have been designed and manufactured in the United States with U.S. steel and other high quality American components.



RTP5401340		
Part #	Description	QTY
04346	RZR 170 A-Arm Brace Bracket	1
04345	RZR 170 Lower Chassis Clamp	1
04480	RZR 170 Front Bumper	1
04492	RZR 170 Tube Clamp	2

Bolt Pack R178		
Part #	Description	QTY
R178	RZR Front Bumper Bolt Pack	1
	<i>3/8" - 16 x 3/4" Hex Bolt</i>	8
	<i>3/8" - 16 Nylock Nut</i>	2
	<i>3/8" Lock Washer</i>	6
	<i>5/16" - 18 x 3/4" Bolt</i>	4
	<i>5/16" - 18 Nylock Nut</i>	4
	<i>M6-1.00 x 65mm Hex Bolt</i>	2
	<i>M6 Flat Washer</i>	2
	<i>M10 Flat Washer</i>	8

FITMENT NOTES

This RZR model is made internationally and has wide tolerances. Some fitment adjustment may be necessary.

SPECIAL TOOLS

N/A

INSTALLATION TIME

Approximately 1.5 hours
Medium Difficulty

INSTALLATION INSTRUCTIONS

Figure 1A



1. Park vehicle on a level surface and ensure parking brake is on.
2. Remove the two lower bolts from the front fascia. These will be replaced with the supplied M6 x 65mm hex bolts. (Figure 1B)

Figure 1B



3. Hold the bumper up to the machine after examining the brackets in the picture above (Figure 1A) to see how they will connect with the chassis. There will be holes in the factory chassis plate which the front part of the A-arms bolt up to. This plate has proven to be a weak point from the OEM so we supply this A-arm Brace Bracket to structurally tie the chassis together better here. Attach the bracket directly to the frame using 3/8"-16 nuts and 3/8" lock washer. (Figure 2 & 3)

Figure 2

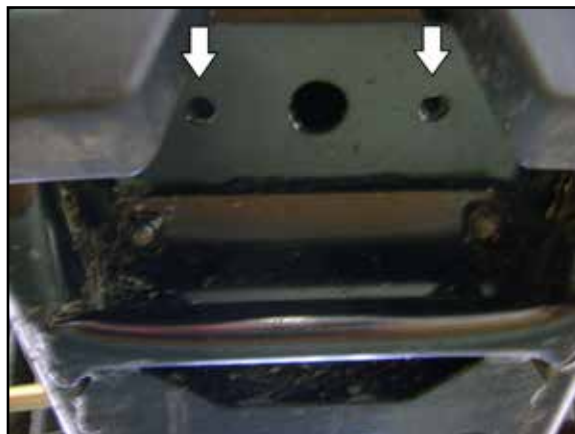
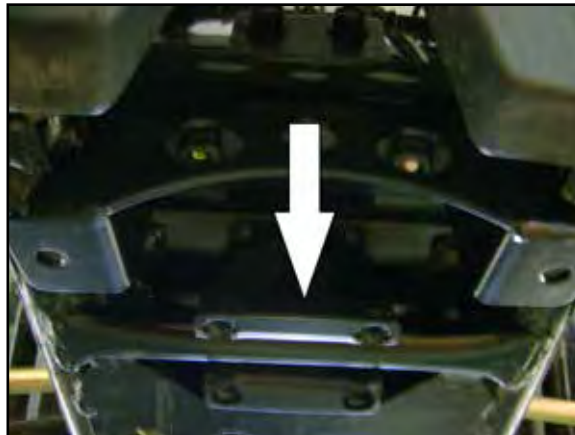


Figure 3



4. The shorter, 4-hole clamp is supposed to clamp over the cross tube in the lower frame and fasten down to the bumper. This is also meant to strengthen the base area of the chassis and the new bumper so everything is not relying on the two M6 bolts in the fascia. Hang clamp in place as shown in Figure 4.

Figure 4



5. Hold the bumper up to the machine and loosely install the M6 x 65mm hex bolts and M6 washers to hold the bumper in place. (Figure 5)

Figure 5



6. Under the hood, the rigid mount brackets should be saddling the frame tubes. Use the similar looking brackets and the supplied 5/16-16 hardware to loosely clamp the rigid mount brackets in place. (Figure 6)

Figure 6



7. Using the remaining supplied 3/8-16 hardware bolt through the bumper base metal into the lower clamp and brace bracket. Be sure to use the supplied lock washers since these threads have no locking ability without them.
8. Once all the hardware is loosely installed you can begin tightening everything up. Torque all 3/8" hardware to 25ft-lbs, all 5/16" hardware to 130 in-lbs, and M6 hardware to 7 ft-lbs.
9. After a few hours of riding, check hardware to ensure hardware is still at spec.

THANK YOU FOR YOUR BUSINESS!

For questions or additional information feel free to call and ask for tech support or email us through our website at: rtproutv.com/contact



Show Us Your Ride!

Get a photo of your RT Pro UTV equipped vehicle and send them in for a chance to be featured in our customer gallery!