



COMMANDER / MAVERICK NERF BARS

COMMANDER/MAVERICK | ALL YEARS

Part #: RTP5402805

Rev. 052219

491 W. Garfield Ave., Coldwater, MI 49036 • Phone: 517-278-7768

E-mail: sales-rtpro@ridefox.com

SAFETY WARNING

RT Pro UTV recommends this system be installed by a professional technician. In addition to these instructions, professional knowledge of disassembly/ reassembly procedures and post installation checks must be known.

WHY BUY RT PRO UTV

Great off-road driving and racing comes with having the most rugged and durable machine in the pack.

RT Pro UTV performance enhancing products will make your off-road machine stronger, tougher and safer so you can have more fun and less breakdowns.

For over a decade, RT Pro UTV staff have been taking brand new UTVs and driving them to their breaking point. When they bend, break or falter, we take them back to shop and create a fix that stops the problem from happening again.

There is no other company in the industry that puts more thought, engineering and design innovation into their products than we do. Our team is made up of off-road racers, mechanical engineers and talented fabricators who live and breathe all things motorsport. Above all, we share a passion for innovation, quality construction and getting things right.

All of our products are designed for assembly by weekend warriors with normal garage tools and the occasional spot-weld. Assembly directions are complete and thorough.

Remember, when you buy a RT Pro UTV product for your UTV, all of the parts have been designed and manufactured in the United States with U.S. steel and other high quality American components.



RTP5402805		
Part #	Description	QTY
04261	Nerf Bar Drv.	1
04262	Nerf Bar Pass	1
R182	Bolt Pack	1
	3/8-16 x 2" Hex Bolt	4
	3/8-16 x 1" Hex Bolt	2
	3/8 SAE Washer	6
	3/8" Split Lock Washer	6

FITMENT NOTES

FITS ALL YEAR COMMANDERS (800R, 1000R, XT, X , DPS, XT-P) FITS ALL YEAR MAVERICK (XXC, XMR, XRS, XRS-DPS)
PLASTIC MUST BE TRIMMED DURING INSTALL

SPECIAL TOOLS

1-1/4" HOLE SAW
7/16" Drill bit

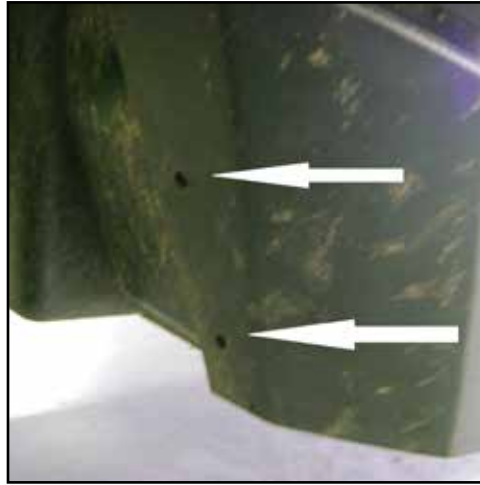
INSTALLATION TIME

Approximately 2 hours
MEDIUM Difficulty

INSTALLATION INSTRUCTIONS

1. Park vehicle on level surface and make sure the vehicle is shifted into park.
2. Remove front hardware retaining the plastic behind each front tire. See Figure 1. Retain factory hardware.

Figure 1



3. Hold the nerf bar up to the stock holes on the frame as shown in Figure 2, mark on the plastic where the top nerf bar mount hits, use a 1-1/4" holesaw and cut plastic so the mount fits through the plastic.

Figure 2



4. For the bottom mounts, drill through the frame parallel to the ground with a 7/16" Drill bit. See Figure 3.

Figure 3



5. Thread 3/8-16 x 2" bolts, with flat and lock washers through the frame, into the nerf bar mounts.
6. For the side upper mount you will need to remove the seat to expose the bracket the seat belt attaches to as shown in Figure 4 and 5. Due to variations in frame, hole in frame may need to be drilled oversized or slotted to line up with nerf bar. Thread the 3/8"-16 x 1" hex bolt with flat and lock washer into the nerf bar mount.

Figure 4

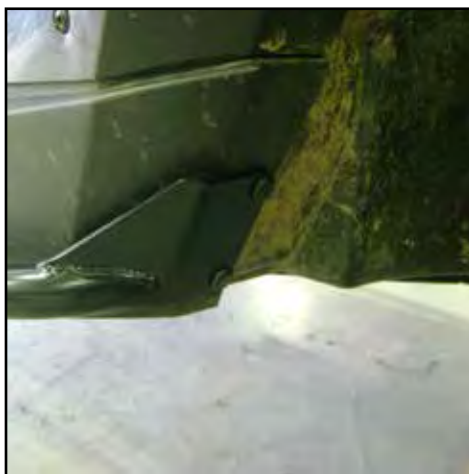


Figure 5



7. Attach nerf bar to front plastic using factory hardware. See Figure 6.

Figure 6



8. Once all hardware is started, tighten nerf bar at all mounting points and repeat steps on opposite side.

THANK YOU FOR YOUR BUSINESS!

For questions or additional information feel free to call and ask for tech support or email us through our website at: rtproutv.com/contact



Show Us Your Ride!

Get a photo of your RT Pro UTV equipped vehicle and send them in for a chance to be featured in our customer gallery!