

# **CRAWL**TEK R E V O L U T I O N

491 W. GARFIELD AVE., COLDWATER, MI 49036 • 517.278.1039  
CRAWLTEKREVOLUTION.COM • E-MAIL: SALES-CRAWLTEK@RIDEFOX.COM

## INSTALLATION INSTRUCTIONS

### Blaze Front Skid Plate

**CWLFB19001**

FOR USE WITH  
FORD BRONCO MODELS 2021-2022  
EQUIPPED with CRAWLTEK BLAZE BUMPER



CrawlTek YouTube

PLEASE READ THROUGH INSTRUCTIONS BEFORE INSTALLING

2023-03-01

## WHAT'S IN THE BOX?

PLEASE VERIFY KIT CONTENTS BEFORE BEGINNING INSTALLATION

<b>CWLFB19001</b>		<b>2020-22 FORD BRONCO BLAZE FRONT SKID PLATE</b>
06250	1	BRONCO BLAZE LOWER SKID PLATE
06251	1	BRONCO BLAZE - SKID PLATE - MESH INSERT
06263	2	SPACER PLATES - NO WINCH MOUNT
06266	1	BRONCO INTERCOOLER SKID PLATE BRACKET - DRIVER'S SIDE
06267	1	BRONCO INTERCOOLER SKID PLATE BRACKET - PASSENGER'S SIDE
06268	1	BRONCO ALUMINUM SKID PLATE COVER
05191	2	LOWER INTERCOOLER MOUNT SPACER
<b>C0049</b>	<b>1</b>	<b>BOLT PACK</b>
	2	M10-1.50 X 40MM BOLT - CLASS 10.9 - CLEAR ZINC
	2	3/8" USS WASHER - CLEAR ZINC
	2	3/8"-16 X 1-1/4" BHSCS - STAINLESS STEEL - BLACK OXIDE COATED
	13	3/8"-16 X 3/4" FHSCS - STAINLESS STEEL - BLACK OXIDE COATED
	13	3/8"-16 SERRATED EDGE FLANGED NUT - CLEAR ZINC
	2	1/4"-20 X 3/4" FHSCS - 18-8 STAINLESS STEEL - BLACK OXIDE COATED
	10	1/4"-20 X 3/4" BHSCS - 18-8 STAINLESS STEEL - BLACK OXIDE COATED
	10	1/4"-20 SERRATED EDGE FLANGED NUT - CLEAR ZINC

## RECOMMENDED TOOLS

1. IMPACT WRENCH
2. RATCHETING COMBINATION WRENCH
3. ALLEN WRENCHES

## PRE-INSTALLATION NOTES

1. THE BLAZE SKID PLATE IS DESIGNED TO WORK ONLY WITH CRAWLTEK BLAZE BUMPERS.



## SKID PLATE ASSEMBLY

### STEP 1:

INSTALL CRAWLTEK SKID PLATE COVER USING 13 COUNTER SUNK FLAT HEAD ALLEN BOLTS AND FLANGE NUTS. (FIG. 1)



FIGURE 1

### STEP 2:

INSTALL VENT PLATE USING 10 PROVIDED BUTTON HEAD ALLEN BOLTS AND FLANGE NUTS. (FIG. 2)



FIGURE 2



**STEP 3:**

REMOVE PASSENGER SIDE AND DRIVERS SIDE INTERCOOLER BRACKETS. RETAIN FACTORY HARDWARE. **(FIG. 3)**



**FIGURE 3**

**STEP 4:**

REMOVE INTERCOOLER RUBBER ISOLATORS ON BOTH SIDES. INSTALL SPACER ABOVE RUBBER ISOLATOR **(FIG. 4A)** BETWEEN INTERCOOLER AND ISOLATOR. **(FIG. 4B)**



**FIGURE 4A**



**FIGURE 4B**

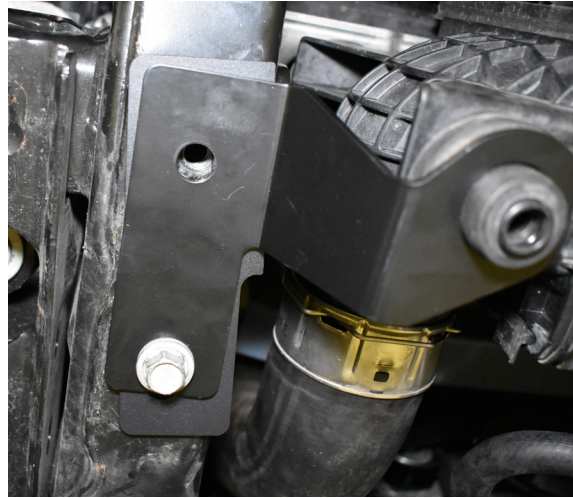


**STEP 5:**

INSTALL SPACER BRACKET (**FIG. 5A**) BETWEEN FRAME AND PROVIDED INTERCOOLER BRACKET WITH ONLY THE REAR FACTORY BOLT. ALIGN HOLE THEN SNUG BOLT. (**FIG. 5B**)



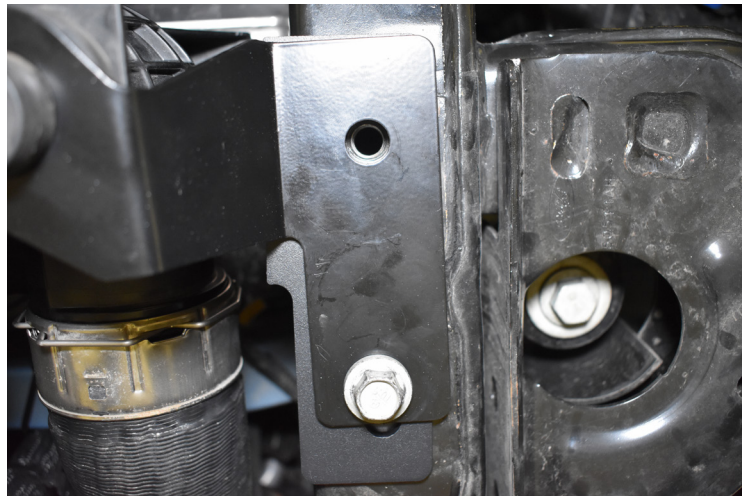
**FIGURE 5A**



**FIGURE 5B**

**STEP 6:**

INSTALL SPACER AND PROVIDED INTERCOOLER BRACKET ON THE DRIVERS SIDE (**FIG. 6**) IN TH SAME MANNER AS THE PASSENGER SIDE. INSTALL ONLY THE REAR FACTORY BOLT. ALIGN FRONT HOLE AND SNUG BOLT.



**FIGURE 6**

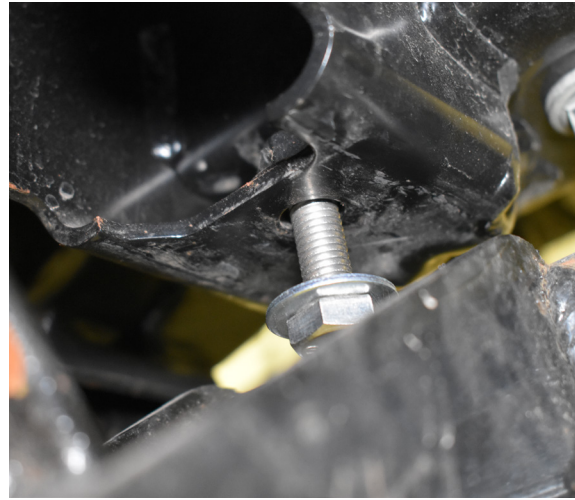


**STEP 7:**

INSTALL 2 PROVIDED REAR BOLTS AND WASHERS INTO FRAME LEAVING APPROXIMATELY 1/2 BOLT THREAD EXPOSED. **(FIG. 7A, FIG. 7B)** THIS IS WHERE THE SLOTTED SKID PLATE HOLES WILL MOUNT.



**FIGURE 7A**



**FIGURE 7B**

**STEP 8:**

REMOVE THE THREE BUTTON HEAD BOLTS FROM THE BOTTOM OF YOUR CRAWLTEK BLAZE BUMPER. RETAIN HARDWARE FOR RE-USE. **(FIG.8)**



**FIGURE 8**



**STEP 9:**

INSTALL SKID PLATES SLOTTED HOLES INTO 2 REAR BOLTS (**FIG. 9A, FIG. 9B**), LIFTING FRONT OF SKID PLATE AND FASTENING FRONT OF SKID PLATE TO BUMPER. (**FIG.9C**)



**FIGURE 9A**



**FIGURE 9B**



**FIGURE 9C**

**STEP 10:**

INSTALL FACTORY BOLTS INTO FRONT HOLES IN THE DRIVERS AND PASSENGER SIDE INNER COOLER BRACKETS. BOLTS SHOULD BE INSTALLED THROUGH SKID PLATE, INNER COOLER, SPACER PLATE, INTO FRAME NUT. (**FIG.10**)



**FIGURE 10**

**STEP 11:**

TIGHTEN ALL HARDWARE.





## YOU'RE NOT DONE YET!

*Thank you for your new CrawlTek Revolution purchase! Follow us on facebook for up to date coverage of new product releases. We love feedback, if you have any questions about the installation or parts were missing please contact us at [sales-crawltek@ridefox.com](mailto:sales-crawltek@ridefox.com) or call us at 517.278.1039.*

*Be sure to show off your jeep to the rest of the CrawlTek Revolution online. Find us on facebook and instagram to keep up on new products, upcoming events and more action. Tag us @crawltek for a chance to get featured*





# **CRAWL**TEK R E V O L U T I O N

491 W. GARFIELD AVE., COLDWATER, MI 49036 • 517.278.1039  
CRAWLTEKREVOLUTION.COM • E-MAIL: SALES-CRAWLTEK@RIDEFOX.COM

## **INSTALLATION INSTRUCTIONS**

### **Blaze Front Skid Plate with Winch Mount**

**CWLFB19011**

**FOR USE WITH  
FORD BRONCO MODELS 2021-2022  
EQUIPPED with CRAWLTEK BLAZE BUMPER**



CrawlTek YouTube

**PLEASE READ THROUGH INSTRUCTIONS BEFORE INSTALLING**

2023-03-01

## WHAT'S IN THE BOX?

PLEASE VERIFY KIT CONTENTS BEFORE BEGINNING INSTALLATION

<b>CWLFB19001</b>		<b>2020-22 FORD BRONCO BLAZE FRONT SKID PLATE</b>
06250	1	BRONCO BLAZE LOWER SKID PLATE
06252	1	BRONCO BLAZE - SKID PLATE - INVERTED WINCH FAIRLEAD
06258	1	BRONCO INVERTED WINCH MOUNTING BRACKET
06264	1	BRONCO INTERCOOLER SKID PLATE BRACKET - DRIVER'S SIDE
06265	1	BRONCO INTERCOOLER SKID PLATE BRACKET - PASSENGER'S SIDE
06268	1	BRONCO ALUMINUM SKID PLATE COVER
06269	1	BRONCO INTERCOOLER SKID PLATE BRACKET - TOP SIDE - DRIVER'S SIDE
06270	1	BRONCO INTERCOOLER SKID PLATE BRACKET - TOP SIDE - PASSENGER'S SIDE
06322	1	BRONCO WINCH CONTROL MODULE BRACKET
05191	2	LOWER INTERCOOLER MOUNT SPACERS
<b>C0049</b>	<b>1</b>	<b>BOLT PACK</b>
	2	M10-1.50 X 40MM BOLT - CLASS 10.9 - CLEAR ZINC
	2	3/8" USS WASHER - CLEAR ZINC
	2	3/8"-16 X 1-1/4" BHSCS - STAINLESS STEEL - BLACK OXIDE COATED
	13	3/8"-16 X 3/4" FHSCS - STAINLESS STEEL - BLACK OXIDE COATED
	13	3/8"-16 SERRATED EDGE FLANGED NUT - CLEAR ZINC
	2	1/4"-20 X 3/4" FHSCS - 18-8 STAINLESS STEEL - BLACK OXIDE COATED
	10	1/4"-20 X 3/4" BHSCS - 18-8 STAINLESS STEEL - BLACK OXIDE COATED
	10	1/4"-20 SERRATED EDGE FLANGED NUT - CLEAR ZINC
<b>CO059</b>	<b>1</b>	<b>BOLT PACK - WINCH SPECIFIC HARDWARE</b>
	2	3/8"-16 X 1" BOLT - GRADE 5 - CLEAR ZINC
	2	3/8" SAE WASHER - CLEAR ZINC
	2	3/8"-16 SERRATED EDGE FLANGED NUT - CLEAR ZINC
	4	M6-1.00 X 20MM BOLT - CLASS 10.9 - CLEAR ZINC
	4	M6 WASHER - CLEAR ZINC
	4	M6-1.00 SERRATED EDGE FLANGED NUT - CLEAR ZINC
	2	M8-1.25 X 25MM BOLT - CLASS 10.9 - CLEAR ZINC
	2	5/16" USS WASHER - CLEAR ZINC

## RECOMMENDED TOOLS

1. IMPACT WRENCH
2. RATCHETING COMBINATION WRENCHES
3. ALLEN WRENCHES
4. VICE GRIPS
5. RECIPROCATING SAW WITH METAL CUTTING BLADE
6. ANGLE GRINDER
7. UTILITY KNIFE
8. TRANSMISSION JACK



## PRE-INSTALLATION NOTES

1. THE BLAZE SKID PLATE IS DESIGNED TO WORK ONLY WITH CRAWLTEK BLAZE BUMPERS.
2. THE BLAZE SKID PLATE IS DESIGNED TO WORK WITH THE WARN WINCH VR EVO WITH REMOVABLE CONTROLLER.
3. THIS INSTALL REQUIRES THE WARN CONTROL PACK RELOCATION KIT FOR VR EVO - 78" - PART NUMBER: 106011

## SKID PLATE ASSEMBLY

INSTALL CRAWLTEK SKID PLATE COVER USING 13 COUNTER SUNK FLAT HEAD ALLEN BOLTS AND FLANGE NUTS. **(FIG. 1)**



**FIGURE 1**

INSTALL FAIR LEAD PLATE USING 2 PROVIDED FLAT HEAD BOLTS AND FLANGE NUTS AS WELL AS 8 BUTTON HEAD BOLTS AND FLANGE NUTS. **(FIG. 2)** INSTALL FAIRLEAD **(SOLD SEPERATELY)** PER INSTRUCTIONS.



**FIGURE 2**



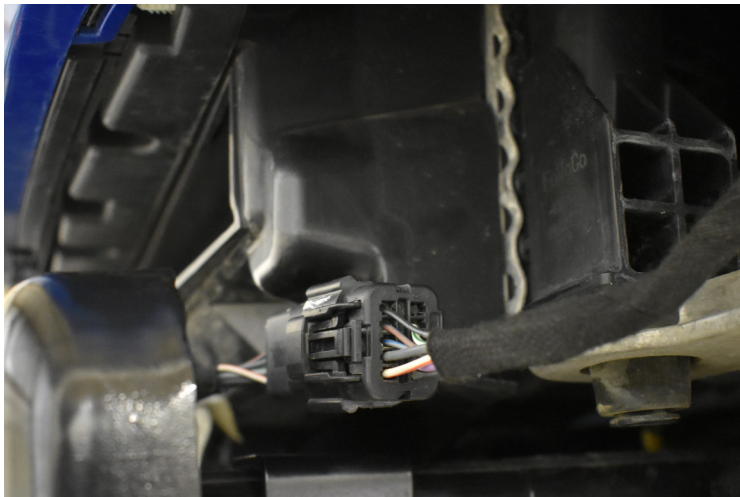
# INTERCOOLER AND TRANSMISSION COOLER RELOCATIONS

REMOVE CRAWLTEK FRONT BUMPER. (FIG. 3)



**FIGURE 3**

UNPLUG INTERCOOLER SHUTTER ASSEMBLY CONTROLLER FROM WIRE HARNESS (FIG. 4)



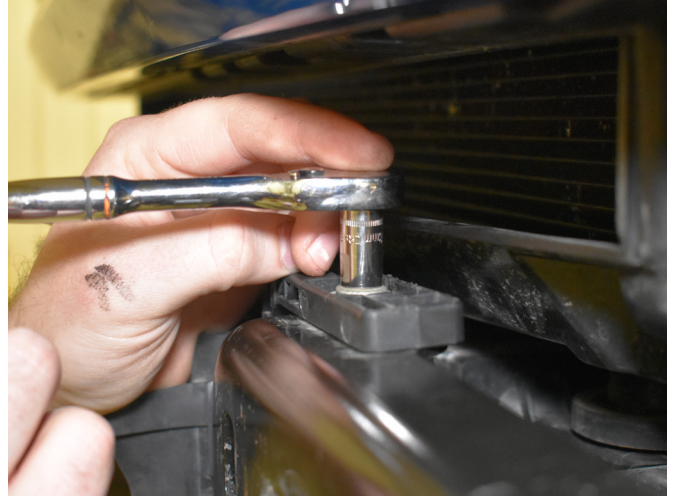
**FIGURE 4**



REMOVE 4 BOLTS RETAINING THE SHUTTER ASSEMBLY ON BOTH SIDES (FIG. 5A,5B)



**FIGURE 5A**



**FIGURE 5B**

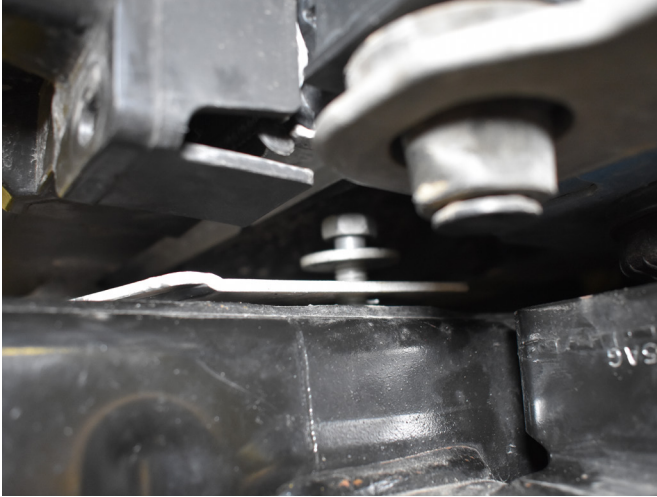
REMOVE INTERCOOLER SHUTTER ASSEMBLY AND SET ASIDE (FIG. 6)



**FIGURE 6**



REMOVE 2 BOLTS RETAINING BRACKET ABOVE INTERCOOLER (FIG. 7A) TILT UP TO REMOVE BRACKET (FIG. 7B)



**FIGURE 7A**



**FIGURE 7B**

REMOVE 2 FACTORY LOWER INTERCOOLER BRACKETS (FIG. 8)



**FIGURE 8**



REMOVE THE INTERCOOLER BY RELEASING CLIPS ATTACHING THE 2 PIPING HOSES BY PRESSING OUTWARD (**FIG. 9**)  
**NOTE: TAKE CARE NOT TO GET ANY DEBRIS INTO INTERCOOLER PIPING.**



**FIGURE 9**

REMOVE 1 BOLT ATTACHING INTERCOOLER REAR SHUTTER ASSEMBLY TO INTERCOOLER AND (**FIG. 10A**) UNCLIP FROM OPPOSITE SIDE. (**FIG. 10B**) THIS **WILL NOT** BE REUSED.



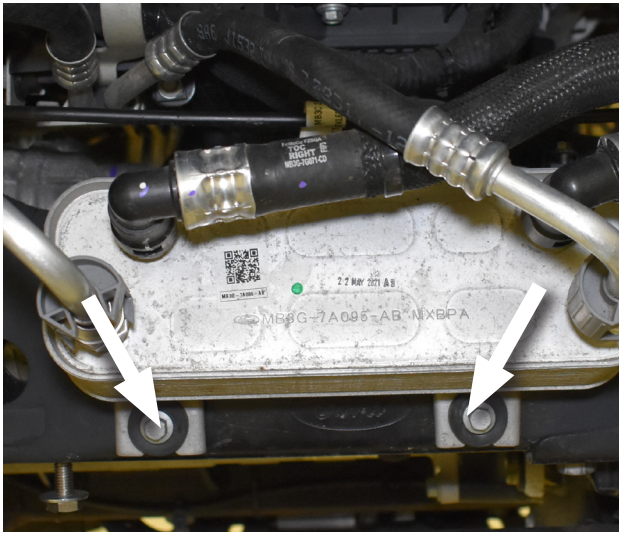
**FIGURE 10A**



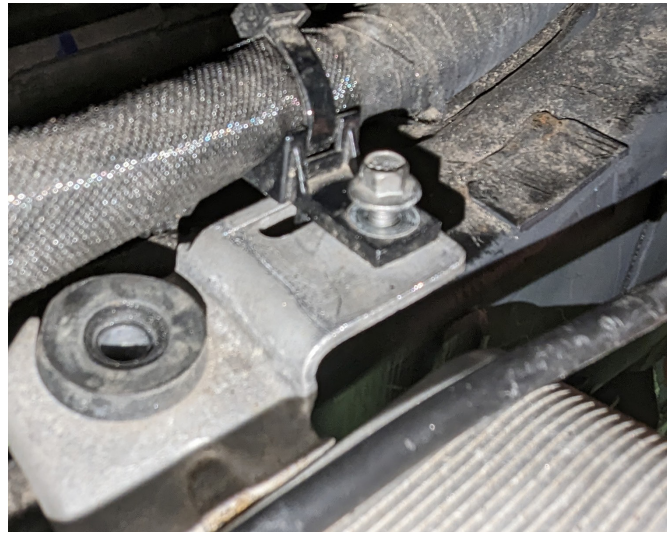
**FIGURE 10B**



REMOVE 4 BOLTS ATTACHING TRANSMISSION COOLER 2 ON TOP AND 2 ON THE BOTTOM. **(FIG. 11A)** REMOVE BOLT TO DETACH WIRE HARNESS **(11B)**

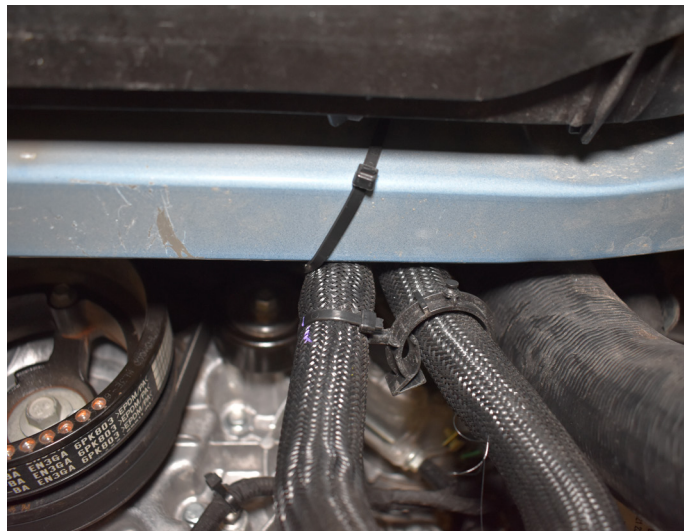


**FIGURE 11A**



**FIGURE 11B**

ZIP TIE COOLANT HOSES TO FRONT CROSS MEMBER. **(FIG. 12)**



**FIGURE 12**





REMOVE COOLANT PUMP AND BRACKET FROM FRAME. **(FIG. 13A)** REMOVE BRACKET FROM PUMP. BRACKET WILL NOT BE REUSED. **(FIG. 13B)** DETACH HOSE CLIP FROM HOSE **(FIG. 13C)**



**FIGURE 13A**



**FIGURE 13B**



**FIGURE 13C**



REPOSITION TRANSMISSION COOLER AND ZIP TIE OUT OF WORKING SPACE. (FIG. 14)

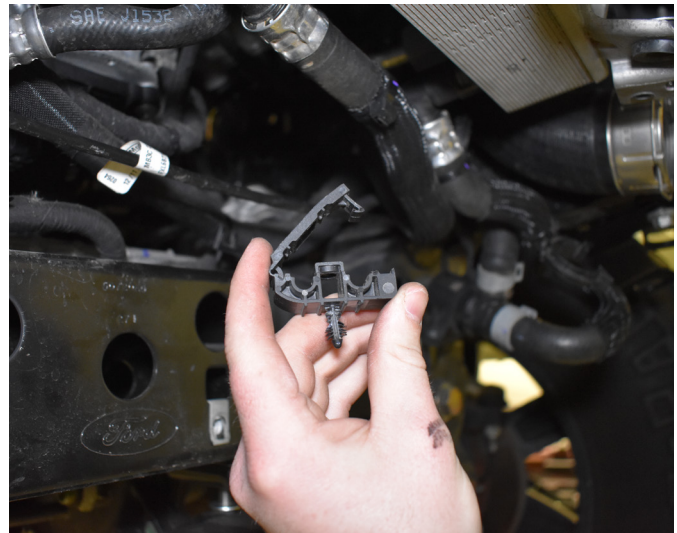


**FIGURE 14**

REMOVE BRAKE LINE BRACKET BOLTS. (FIG. 15A) REMOVE CLIP FROM BRACKET. (FIG. 15B)



**FIGURE 15A**



**FIGURE 15B**



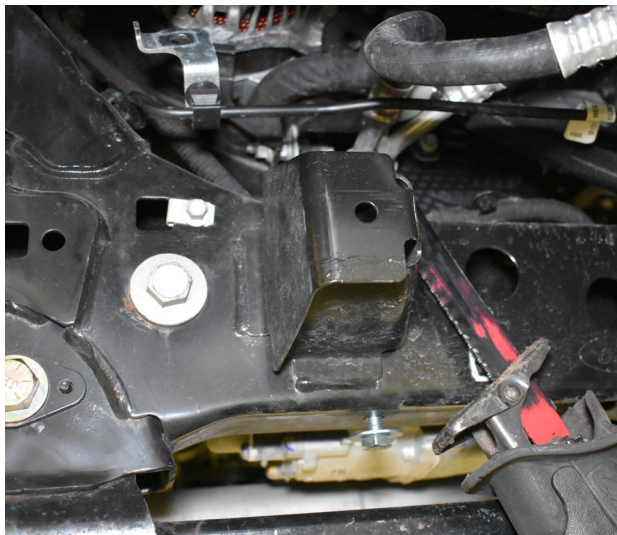
REPOSITION COOLANT PUMP AND LINES UP ONTO FRAME OUT OF WORKING SPACE. (FIG. 16)



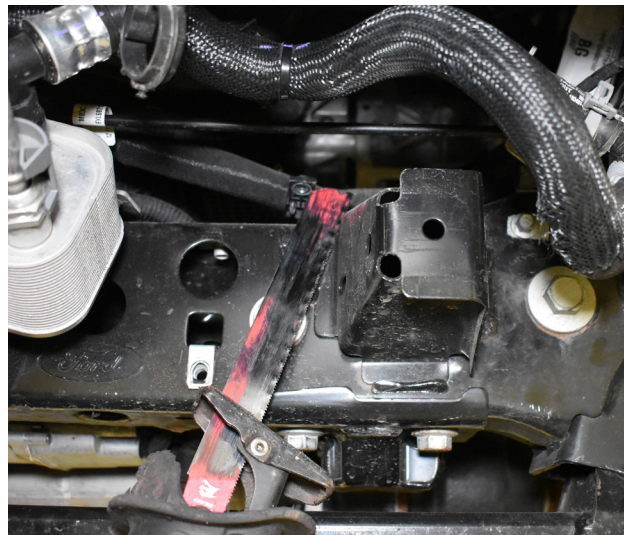
**FIGURE 16**

## FRAME HORN REMOVAL

CUT OFF BOTH FRAME HORNS USING A RECIPROCATING SAW. (FIG. 17A, FIG. 17B)



**FIGURE 17A**



**FIGURE 17B**



CLEAN UP AND SMOOTH AREA WITH GRINDING WHEEL. (FIG. 18A, FIG. 18B) PAINT AREAS TO PREVENT RUST. (FIG. 18C)



**FIGURE 18A**



**FIGURE 18B**



**FIGURE 18C**



## WINCH INSTALLATION

IT IS RECOMMENDED TO LOOSELY INSTALL THE 2 SETS OF BOLTS AND FLANGE NUTS TO MOUNT THE COOLANT PUMP PRIOR TO MOUNTING WINCH TO BRACKET AS SPACE IS TOO TIGHT TO INSTALL PUMP BOLTS ONCE WINCH IS INSTALLED. (FIG. 19A, FIG. 19B)



FIGURE 19A

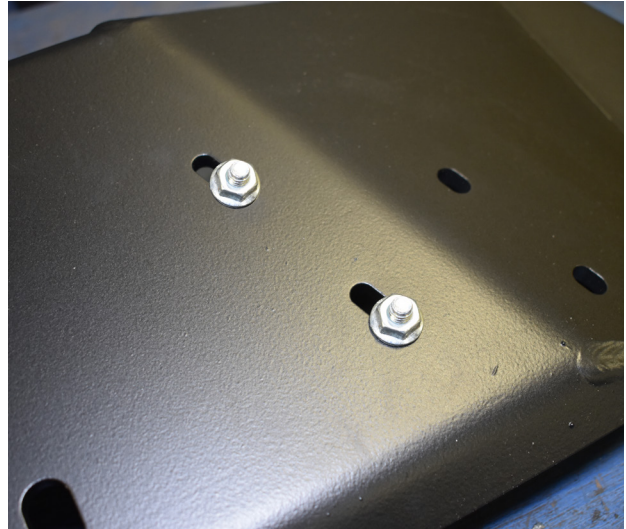


FIGURE 19B

POSITION BRACKET PLATE AS SHOWN IN (FIG. 20A) BOLT PLATE TO WINCH ENSURING THE CORRECT POSITION OF WINCH WIRING CONNECTIONS. (FIG. 20B)



FIGURE 20A



FIGURE 20B



MOVE PASS. SIDE UCLIP (FIG. 21A) TO POSITION IN (FIG. 21B)



**FIGURE 21A**



**FIGURE 21B**

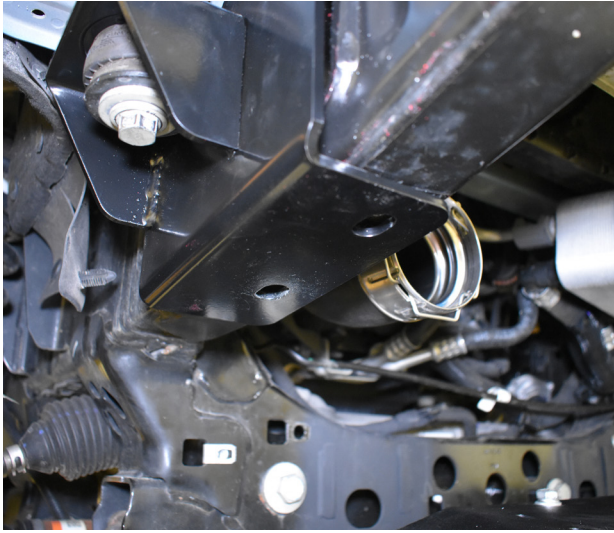
IT IS RECOMMEND THAT YOU USE A TRANSMISSION JACK TO LIFT WINCH INTO PLACE FOR MOUNTING.(FIG. 22)



**FIGURE 22**



IF EQUIPPED WITH BODY MOUNT CHOP BRACKET (**FIG. 23A**), TEMPORARILY MOUNT WINCH BRACKET UNDER BRACKET INTO FRAME, USING ONLY THE REAR BOLT. (**FIG. 23C**) IF NOT EQUIPPED WITH BODY MOUNT CHOP BRACKET USE SPACER BETWEEN FRAME AND WINCH PLATE. (**FIG. 23B**)



**FIGURE 23A**



**FIGURE 23B**



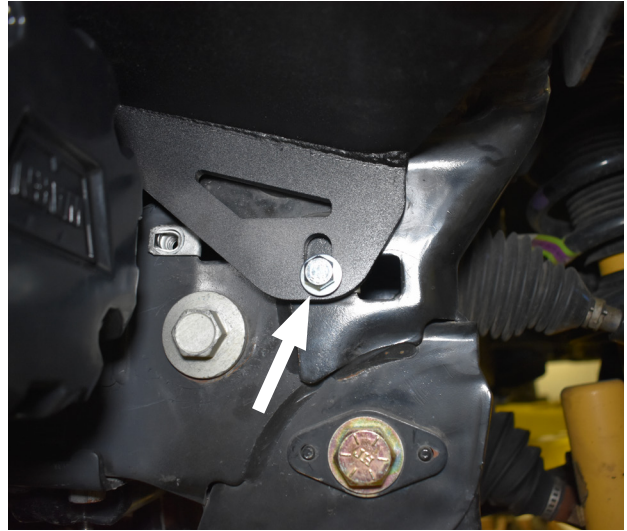
**FIGURE 23C**



INSTALL THE 2 FRONT FACING BOLTS MOUNTING WINCH PLATE TO FACE OF FRAME CROSSMEMBER. (FIG. 24A, FIG. 24B)

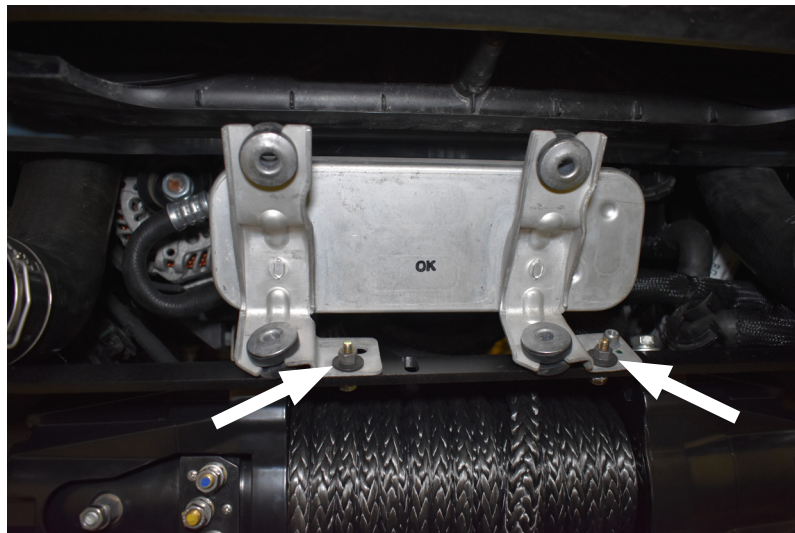


**FIGURE 24A**



**FIGURE 24B**

CUT ZIP TIES HOLDING TRANSMISSION COOLER. MOUNT TRANSMISSION COOLER TO WINCH MOUNT AS SHOWN IN (FIG. 25) MOUNT THE BOLTS FROM THE BOTTOM UP.



**FIGURE 25**

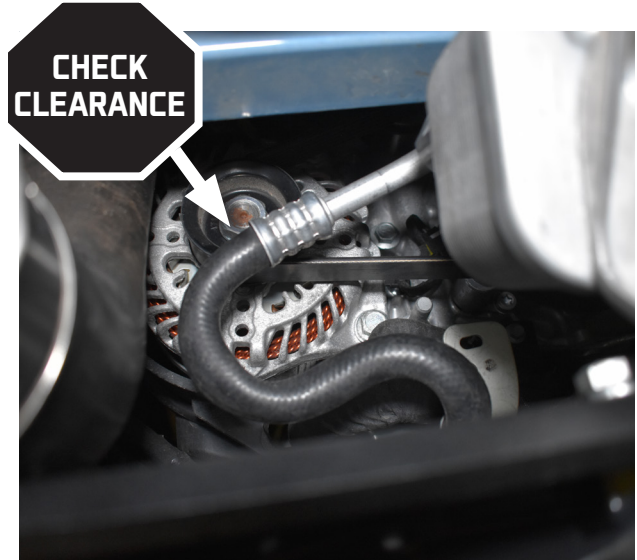




IT MAY BE NECESSARY TO SLIGHTLY BEND TRANSMISSION COOLER BRACKET FORWARD (**FIG. 25A**) TO GAIN CLEARANCE FOR COOLANT LINES FROM ALTERNATOR BELT/PULLEY (**FIG. 25B**)

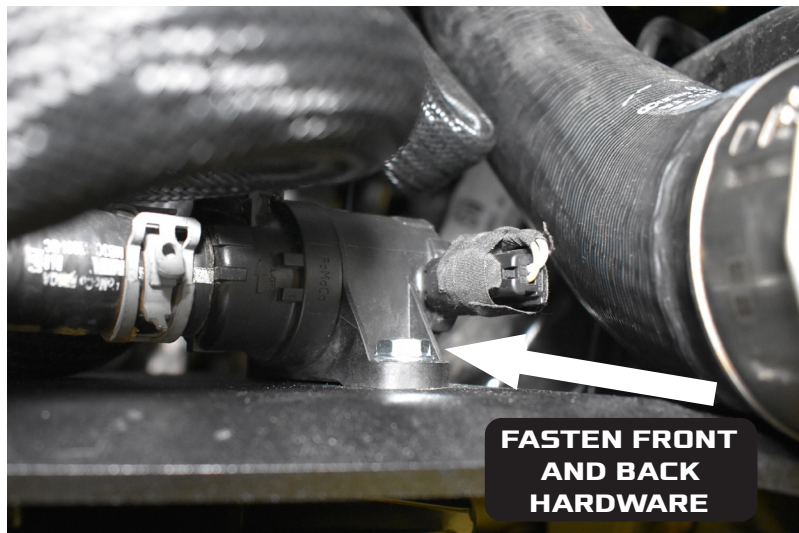


**FIGURE 25A**



**FIGURE 25B**

RE-INSTALL COOLANT PUMP TO WINCH PLATE USING 2 PREVIOUSLY INSTALLED BOLTS AND FLANGE NUTS IN FIG. 19A AND FIG. 19B. (**FIG. 26**)



**FIGURE 26**



USING 2 SETS OF VICE GRIPS PLIERS, PINCH OFF THE UPPER AND LOWER COOLANT HOSES (**FIG. 27A**) TO AVOID ANY EXCESSIVE COOLANT LOSS. IT WILL BE NECESSARY TO SHORTEN COOLANT LINE TO ELIMINATE KINK IN LINE AS A RESULT OF PUMP RELOCATION. REMOVE COOLANT HOSE AND CLAMP FROM COOLANT PUMP UPPER OUTLET/INLET. RETAIN CLAMP FOR RE-USE. TRIM OFF APPROXIMATELY 4 1/2". (**FIG. 27B**) RE-INSTALL COOLANT HOSE USING THE FACTORY CLAMP. CHECK LINE FOR KINKS, REPOSITION LINE BY TWISTING IF NEEDED.



**FIGURE 27A**



**FIGURE 27B**

RE-INSTALL INTERCOOLER (**FIG. 28A**) CLIPPING INTO PIPING. (**FIG. 28B**) NOTE: INSIDE SHUTTER WILL NOT BE REUSED.



**FIGURE 28A**



**FIGURE 28B**



INSTALL NEW UPPER INTERCOOLER BRACKETS ON BOTH SIDES USING PROVIDED BOLT AND FLANGE NUTS. (FIG. 29A, FIG. 29B)

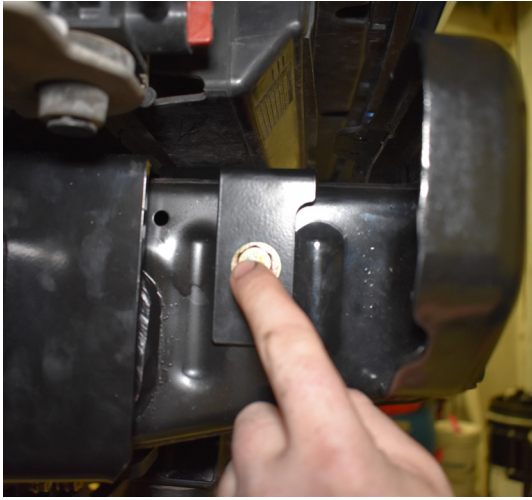


FIGURE 29A



FIGURE 29B

**PERFORM THIS STEP ONE SIDE AT A TIME.** RE-SUPPORT WINCH WITH TRANSMISSION JACK. LOOSEN BUT DO NOT REMOVE THE 2 WINCH BRACKET FRONT FACING BOLTS, SEE (FIG. 24A, 24B) REMOVE WINCH BRACKET BOLT,(FIG. 30A) INSTALL LOWER INTERCOOLER BRACKET AND REPLACE REAR BOLT, DO NOT TIGHTEN. (FIG. 30B) ALIGN FRONT FRAME HOLE WITH BRACKETS BEFORE LOOSELY INSTALLING FRONT BOLT.(FIG. 30C) *NOTE: IF NOT EQUIPPED WITH BODY MOUNT CHOP BRACKET, ENSURE THAT THE INCLUDED SPACERS ARE USED.* TIGHTEN ALL HARDWARE ONCE INSTALLED.

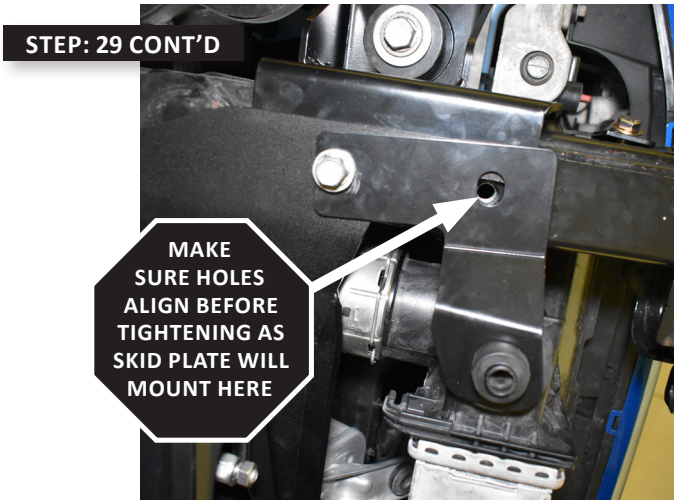


FIGURE 30A



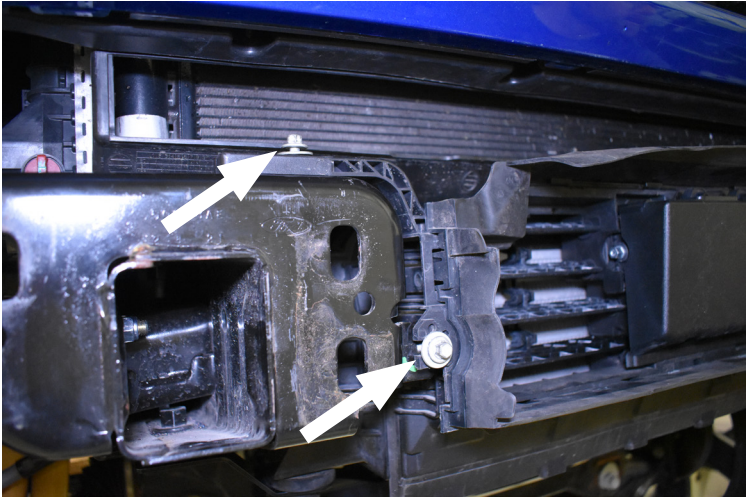
FIGURE 30B





**FIGURE 30C**

RE-INSTALL INTERCOOLER FRONT SHUTTER AND RADAR ASSEMBLY USING 4 FACTORY BOLTS (2 PER SIDE) (FIG. 31)  
PLUG SHUTTER WIRING BACK INTO WIRING HARNESS. SEE (FIG. 4)



**FIGURE 31**

RE-INSTALL YOUR CRAWLTEK BUMPER.



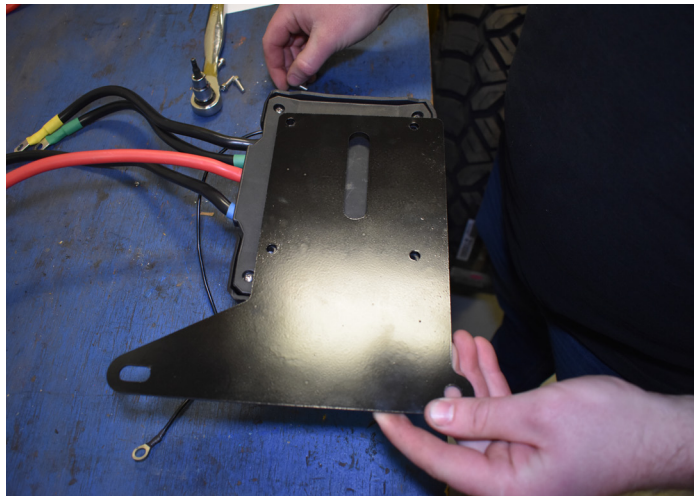
REMOVE THE 3 NUTS FROM THE BOTTOM OF THE PCM BRACKET. RETAIN NUTS FOR RE-USE. **(FIG. 32)**



**FIGURE 32**

PREP CONTROL MODULE BY REPLACING WIRING WITH THE WIRING PROVIDED IN THE WARN CONTROL PACK RELOCATION KIT (WARN PART NUMBER: 106011).

MOUNT CONTROL MODULE TO PROVIDED BRACKET WITH THE 4 WARN PROVIDED ALLEN BOLTS AS SHOWN IN **(FIG. 33)**



**FIGURE 33**

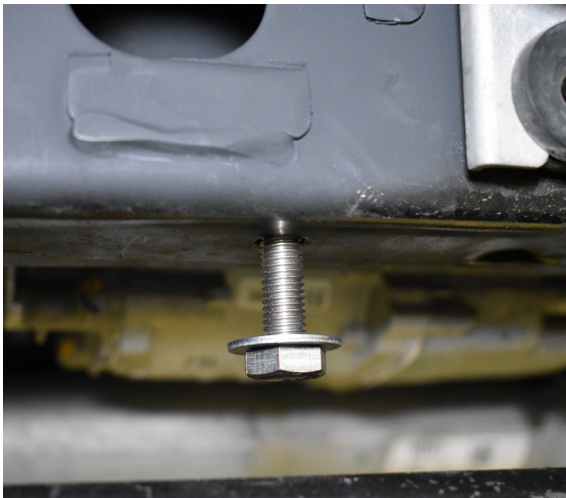


MOUNT MODULE AND BRACKET BETWEEN PCM AND PCM BRACKET USING FACTORY PCM NUTS. **(FIG. 34)** RUN WIRING TO BATTERY AND WINCH. WIRE PER WARN INSTALLATION INSTRUCTIONS.

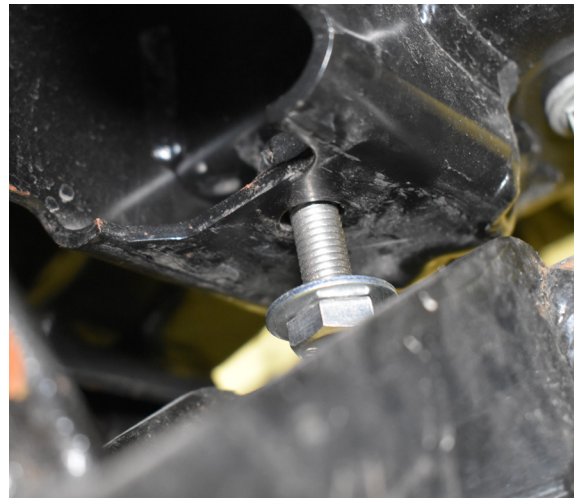


**FIGURE 34**

INSTALL 2 PROVIDED REAR BOLTS AND WASHERS INTO FRAME LEAVING APPROXIMATELY 1/2 BOLT THREAD EXPOSED. **(FIG. 35A, FIG. 35B)** THIS IS WHERE THE SLOTTED SKID PLATE HOLES WILL MOUNT.



**FIGURE 35A**



**FIGURE 35B**



REMOVE THE THREE BUTTON HEAD BOLTS FROM THE BOTTOM OF YOUR CRAWLTEK BLAZE BUMPER. RETAIN HARDWARE FOR RE-USE. **(FIG.36)**



**FIGURE 36**

INSTALL SKID PLATES SLOTTED HOLES INTO 2 REAR BOLTS **(FIG. 37A, FIG. 37B)**, LIFTING FRONT OF SKID PLATE AND FASTENING FRONT OF SKID PLATE TO BUMPER. **(FIG.37C)**



**FIGURE 37A**



**FIGURE 37B**



**FIGURE 37C**



INSTALL DRIVER AND PASSENGER SIDE FACTORY BOLTS THROUGH SKID PLATE INTO FRAME NUT. (FIG.38)



**FIGURE 38**

TIGHTEN ALL HARDWARE.







## YOU'RE NOT DONE YET!

*Thank you for your new CrawlTek Revolution purchase! Follow us on facebook for up to date coverage of new product releases. We love feedback, if you have any questions about the installation or parts were missing please contact us at [sales-crawltek@ridefox.com](mailto:sales-crawltek@ridefox.com) or call us at 517.278.1039.*

*Be sure to show off your jeep to the rest of the CrawlTek Revolution online.  
Find us on facebook and instagram to keep up on new products, upcoming events and more action.  
Tag us @crawltek for a chance to get featured*

