

# **CRAWLTEK**

## REVOLUTION

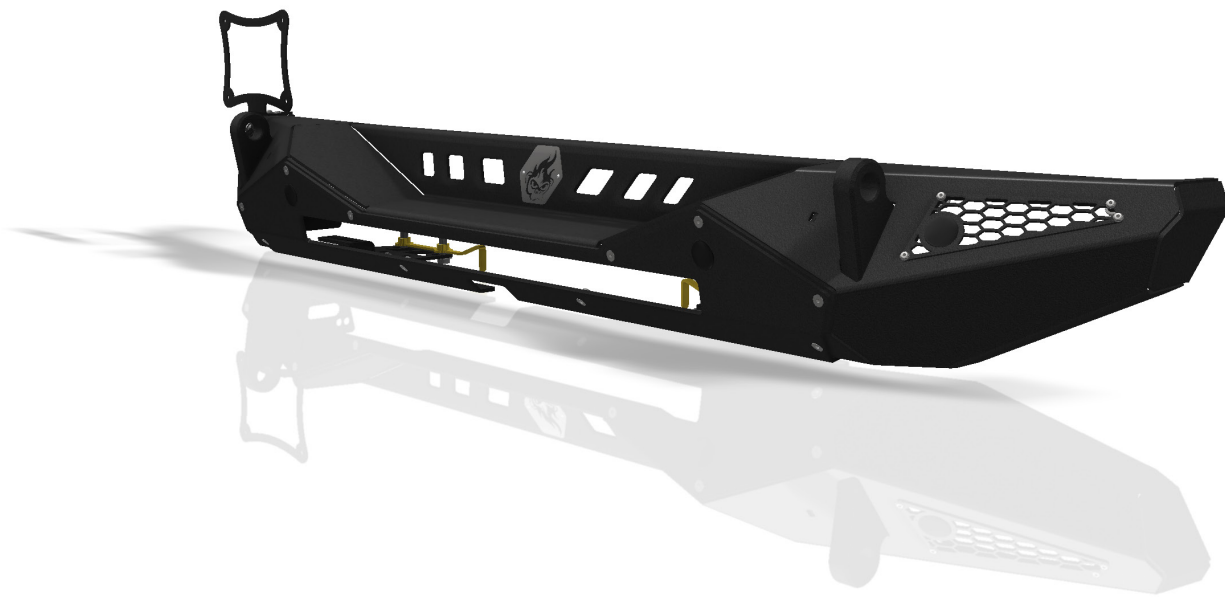
491 W. GARFIELD AVE., COLDWATER, MI 49036 • 517.278.1039  
CRAWLTEKREVOLUTION.COM • E-MAIL: TECH-CRAWLTEK@RIDEFOX.COM

### INSTALLATION INSTRUCTIONS

## BLAZE REAR BUMPER

**JL22101 - MIDWIDTH**

FOR USE WITH ALL  
JL AND JLU MODELS FROM 2018-CURRENT



CrawlTek YouTube

**PLEASE READ THROUGH INSTRUCTIONS BEFORE INSTALLING**

2023-11-15

## WHAT'S IN THE BOX?

PLEASE VERIFY KIT CONTENTS BEFORE BEGINNING INSTALLATION

PART #	Qty	DESCRIPTION
06008	1	BUMPER - JL REAR - BLAZE
06009	1	JL BLAZE REAR CENTER FACE 30IN LIGHTBAR
06010	2	WING VENT
06013	1	JL - FRAME MOUNT
06014	1	JL - FRAME MOUNT
06015	1	CROSSMEMBER MOUNT
06016	1	CROSSMEMBER MOUNT
06017	2	CROSSMEMBER NUT STRIP
06018	1	LICENSE PLATE BRACKET
06177	1	CRAWLTEK SS LOGO 3.5"
C0042	1	LOGO RIVETS
CWLU30010	1	DECAL: CRAWLTEK GEARSHIFT 3.5" X 3.5"
CWLU30020	1	DECAL: CRAWLTEK EYES 6" X 2"
CWLU30030	1	DECAL: CRAWLTEK JAX 3.75" X 2.8"
C0024	<b>1</b>	<b>BOLT PACK</b>
	8	#10-24 X 5/8" BLACK SS BUTTON SOCKET CAP SCREW
	12	1/4"-20 X 1/2" BLACK SS FLAT SOCKET CAP SCREW
	6	1/4"-20 X 3/4" BLACK SS FLAT SOCKET CAP SCREW
	12	1/4"-20 SERRATED FLANGE NUT
	8	7/16"-14 X 1" GRADE 8 HEX CAP SCREW
	4	7/16"-20 X 1.5" GRADE 8 HEX CAP SCREW
	12	7/16" STEEL SAE FLAT WASHER
	8	7/16"-14 SERRATED FLANGE NUT
	4	1-1/8" PLASTIC LOCKING PANEL PLUG
	4	M12-1.5 FLANGE NUT
	4	1/4"-20 X 1/2" SS STAR DRIVE TRUSS HEAD
	2	1/4"-20 X 5/8" SS BUTTON SOCKET CAP SCREW

## TOOLS REQUIRED

SAFETY GLASSES

21MM SOCKET OR WRENCH

18MM SOCKET OR WRENCH

17MM SOCKET OR WRENCH

16MM SOCKET OR WRENCH

10MM SOCKET OR WRENCH

8MM SOCKET OR WRENCH

11/16" SOCKET OR WRENCH

5/8" SOCKET OR WRENCH

9/16 WRENCH

7/16" SOCKET

3/16" ALLEN HEAD SOCKET



## FACTORY REAR BUMPER REMOVAL

### STEP 1:

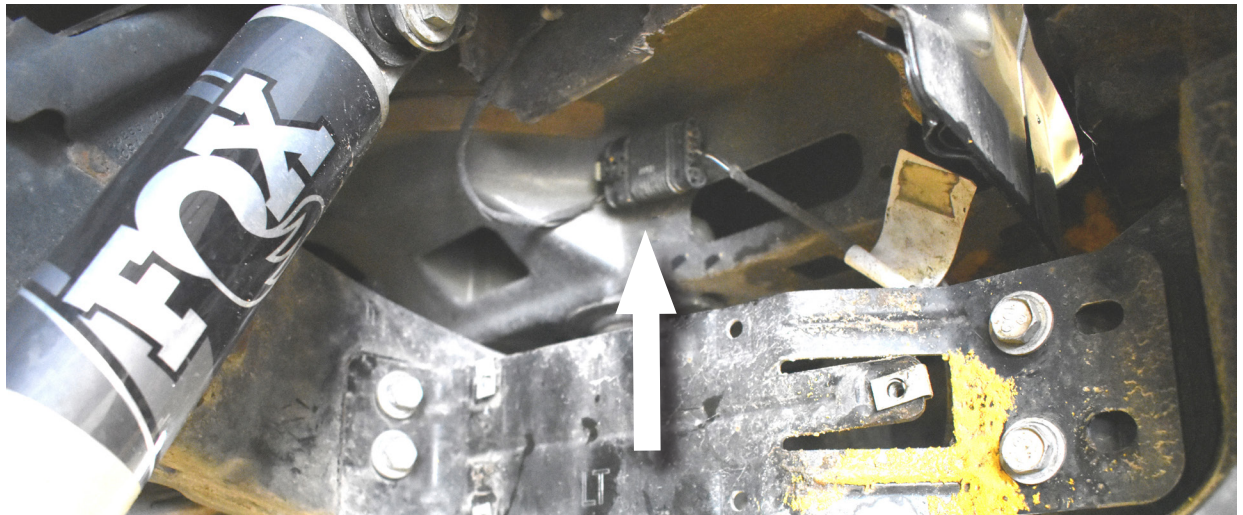
REMOVE (6) 8MM BOLTS FROM THE CLOSEOUT PANEL, (3) FROM EACH SIDE (**FIG. 1**)



**FIGURE 1**

### STEP 2:

DISCONNECT REAR BUMPER HARNESS LOCATED UNDER THE DRIVER CORNER (IF APPLICABLE, **FIG 2**).

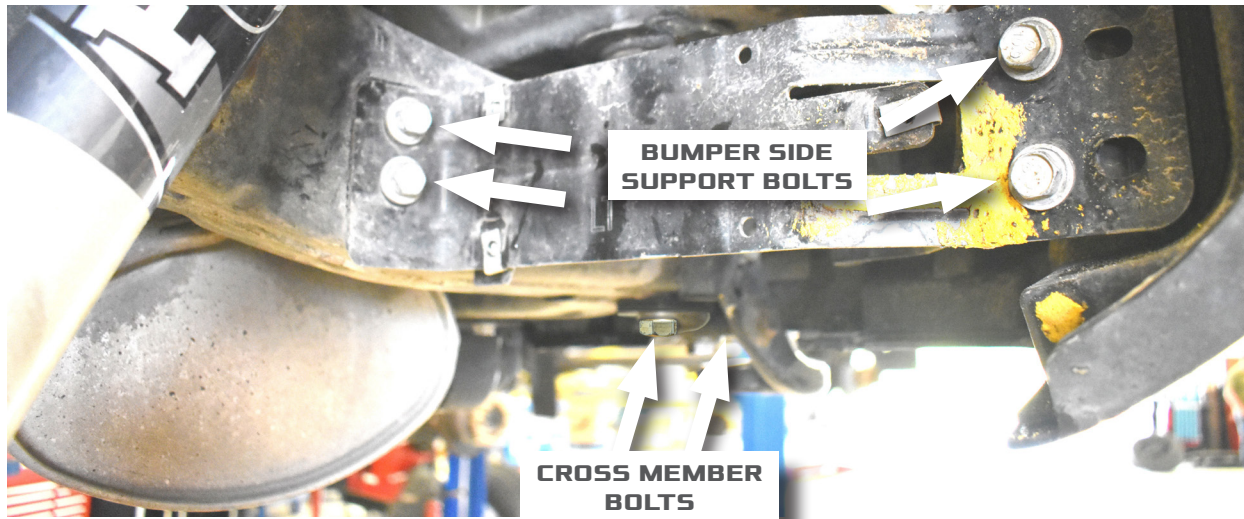


**FIGURE 2**



**STEP 3:**

REMOVE (4) 16MM BOLTS FROM CROSSMEMBER AND REMOVE (4) 16MM BUMPER SIDE SUPPORT BOLTS SHOWN IN **FIGURE 3**.



**FIGURE 3**

**STEP 4:**

SUPPORT BUMPER AND HAVE AN ASSISTANT AID IN REMOVAL. REMOVE (4) 16MM BUMPER MOUNTING BOLTS AT THE FRAME HORN (END OF FRAME RAIL) (TWO FROM EACH SIDE) WITH A 16MM DEEP SOCKET. REMOVE BUMPER.

**STEP 5:**

**SIDE NOTE:** IF EQUIPPED WITH TRAILER HITCH REMOVE TWO BOLTS WITH 10MM SOCKET ON EITHER SIDE OF THE HITCH.

**STEP 6:**

USING A 21MM SOCKET REMOVE EACH BUMPER SIDE SUPPORT BRACKET AND REMOVE THE BUMPER MOUNTING BRACKETS.

**STEP 7:**

REMOVE THE (4) 18MM BOLTS THAT SECURE THE FACTORY TOW HOOKS TO THE VEHICLE (IF EQUIPPED WITH FACTORY TOW HOOKS).



## ASSEMBLING THE JEEP BLAZE REAR BUMPER

### STEP 8:

USING FOUR (4) OF THE SUPPLIED 10-24 HARDWARE, INSTALL THE PASSENGER SIDE BUMPER VENT (**FIG 4**). TIGHTEN HARDWARE. REPEAT FOR DRIVER SIDE VENT.

### STEP 9:

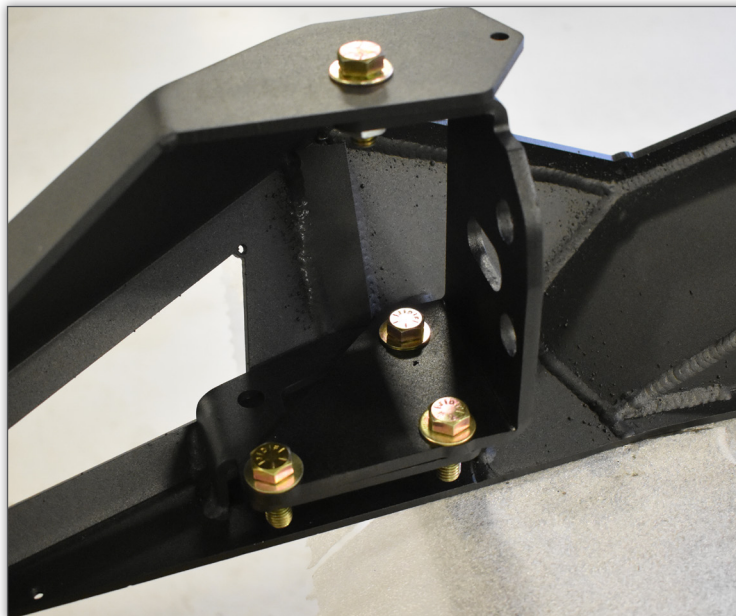
INSTALL PARKING SENSORS INTO OUTER VENTS IF EQUIPPED. IF REAR SENSORS NOT EQUIPPED, INSTALL PROVIDED PANEL PLUGS FROM C0024 BOLT PACK (**FIG. 4**).



**FIGURE 4**

### STEP 10:

INSTALL SIDE FRAME BRACKETS LOOSELY ON BUMPER WITH 7/16" HARDWARE (**FIG 5**).

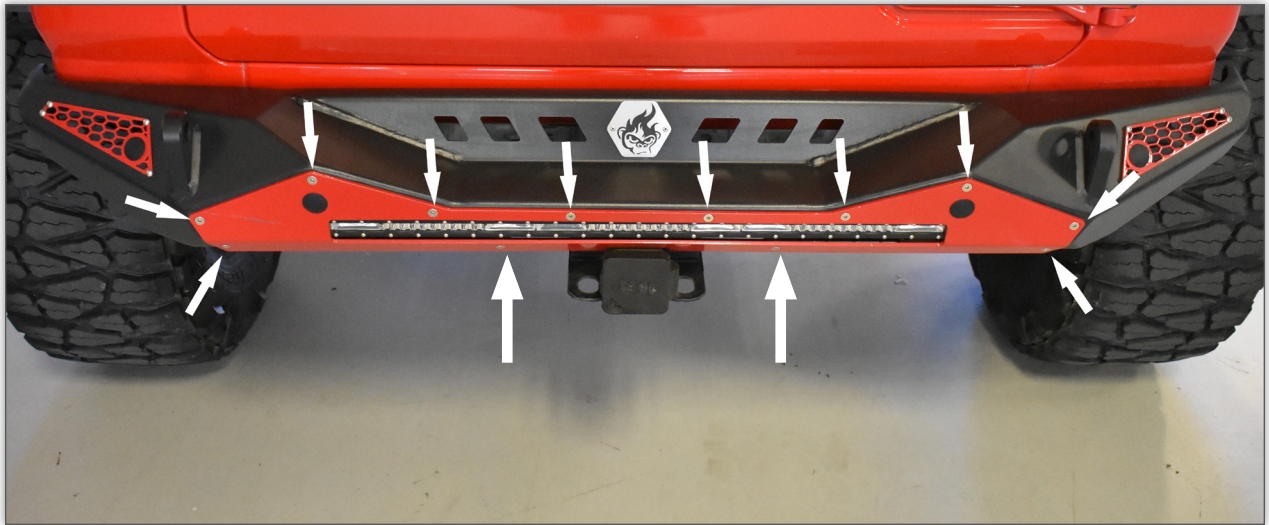


**FIGURE 5**



**STEP 11:**

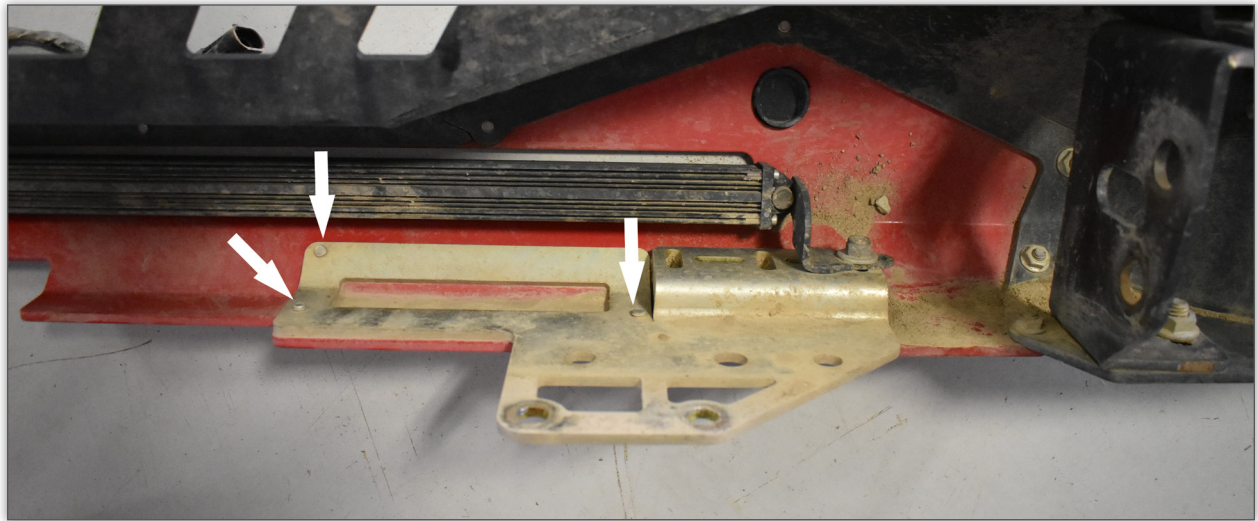
USING A 1/4"-20 TAP, CLEAN BUMPER SHELL HOLES WHERE CENTER SECTION MOUNTS TO REMOVE EXCESS POWDERCOAT. INSTALL THE CENTER SECTION ONTO BUMPER MAIN BODY USING 1/4" FLAT HEAD SOCKET SCREWS (FIG 6).



**FIGURE 6**

**STEP 12:**

INSTALL CROSSMEMBER BRACKETS TO CENTER SECTION USING WITH 1/4" FLAT HEAD SOCKET SCREWS (FIG 7).



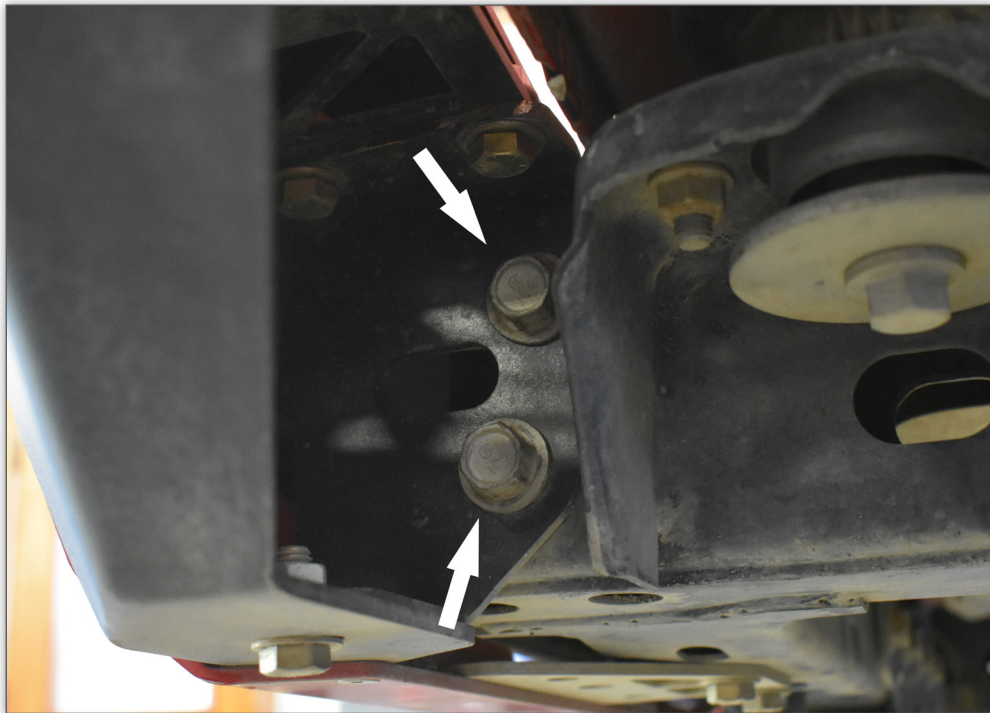
**FIGURE 7**



## INSTALLATION OF THE BLAZE REAR BUMPER

### STEP 13:

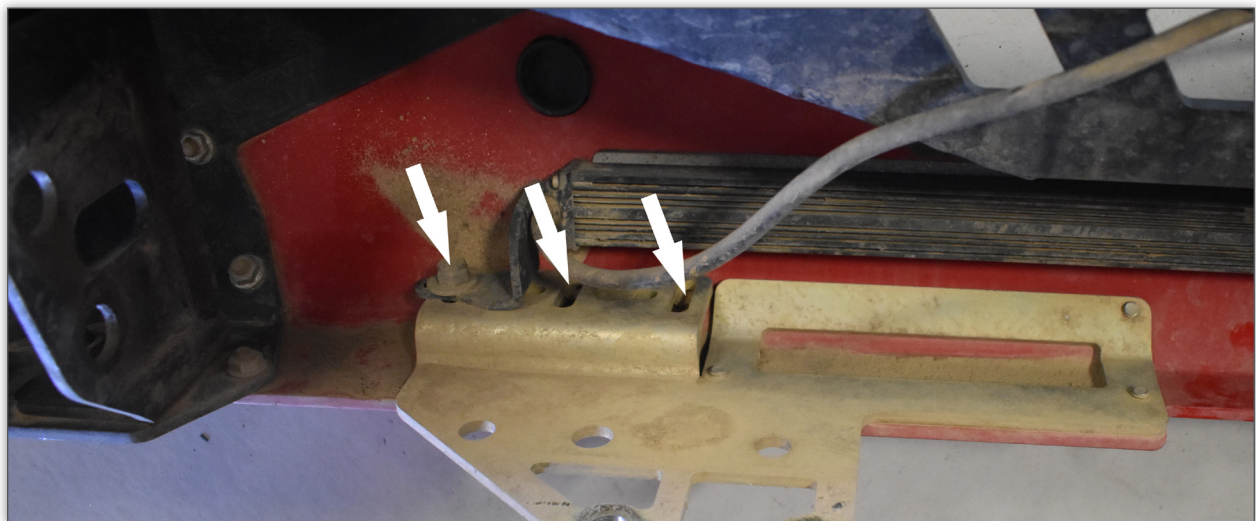
INSTALL BUMPER ONTO VEHICLE FRAME USING THE FACTORY HARDWARE, ALIGN BUMPER AND TIGHTEN ALL BOLTS (**FIG 8**).



**FIGURE 8**

### STEP 14: (OPTIONAL)

INSTALL LIGHTBAR (NOT INCLUDED) USING ONE OF THE 3 MOUNTING SLOTS (**FIG 9**). THE JL BLAZE REAR BUMPER WAS DESIGNED TO ACCOMMODATE SEVERAL POPULAR 30" LIGHT BARS, HOWEVER SOME CUSTOM MODIFICATIONS MAY BE REQUIRED TO THE MANUFACTURER BRACKETS. BAJA DESIGNS RTL 30" LED REAR LIGHT BAR IS RECOMMENDED FOR THIS APPLICATION.



**FIGURE 9**



**STEP 15:**

ALIGN PASSENGER MOUNTING BRACKET WITH HOLES IN BOTTOM OF CROSSMEMBER (**FIG 10**) AND FASTEN WITH 7/16"-20 BOLT IN LOCATION. MIRROR THIS PROCESS ON THE DRIVER SIDE.

**NOTE:** DRILLING INTO CROSSMEMBER IS REQUIRED TO FULLY MOUNT CROSSMEMBER BRACKET.



**FIGURE 10**

**STEP 16:**

USING THE MOUNTING BRACKETS AS A GUIDE, DRILL THE SECOND PASSENGER MOUNTING HOLE. START SMALL AND MOVE UP IN DRILL SIZE ENDING WITH 15/32" OR 1/2" (**FIG 11**). REPEAT PROCESS ON DRIVER SIDE MOUNTING BRACKET.

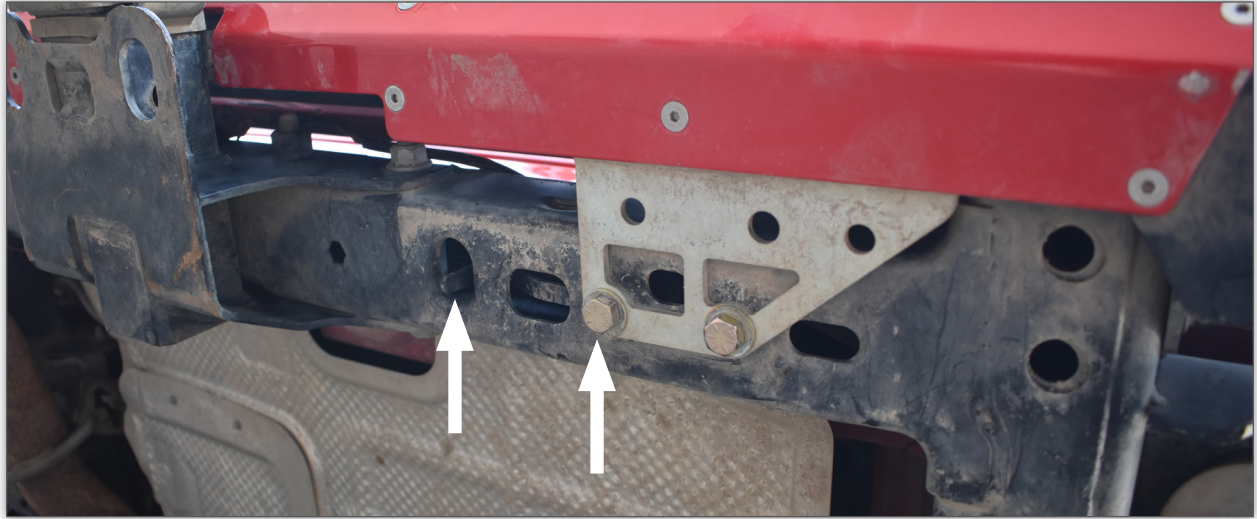


**FIGURE 11**



**STEP 17:**

INSERT CROSSMEMBER NUT STRIPS INTO FRAME, THEN INSERT THE REMAINING 7/16"-20 HARDWARE AND TIGHTEN (**FIG 12**).



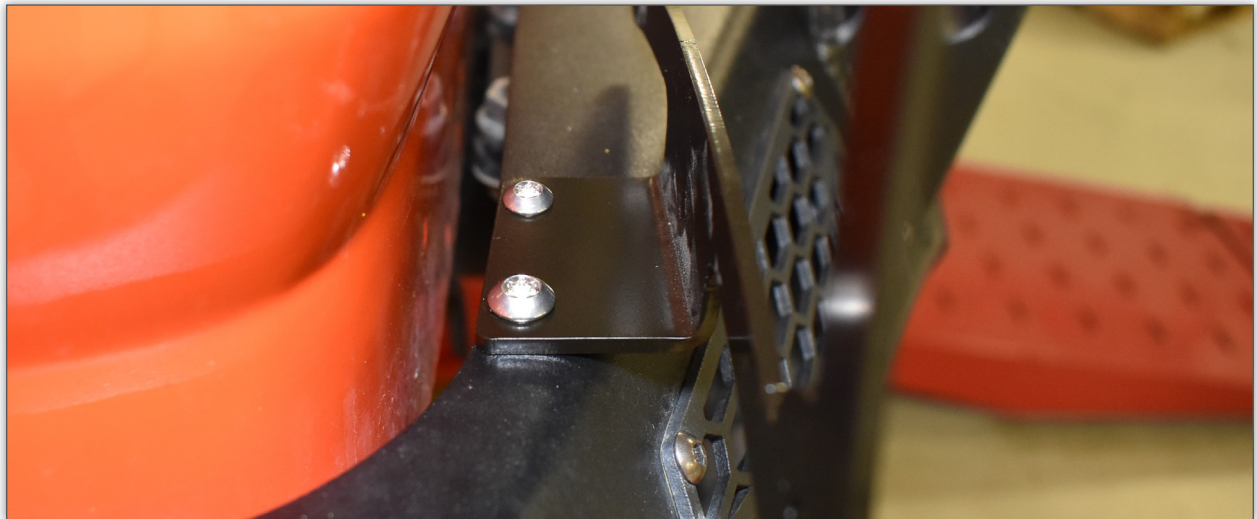
**FIGURE 12**

**STEP 18:**

RECONNECT REAR BUMPER HARNESS (IF APPLICABLE) UNDER THE DRIVER CORNER. ENSURE HARNESS IS CLEAR FROM MOVING OBJECTS AND FASTENED BEHIND THE INNER FENDER.

**STEP 19:**

INSTALL LICENSE PLATE FRAME TO LEFT SIDE OF THE BUMPER WITH 1/4"-20 X 5/8" BSCS FROM C0024 (**FIG 13**). FASTEN LICENSE PLATE TO FRAME WITH 1/4"-20 X 1/2" BUTTON HEAD TORX BOLTS (**FIG 14**). IF THE LICENSE PLATE RELOCATION KIT IS ALREADY INSTALLED (CWLJL38001, SHOWN IN FINAL IMAGE), THIS INSTALLATION STEP IS NOT NEEDED.



**FIGURE 13**





FIGURE 14





## YOU'RE NOT DONE YET!

*Thank you for your new CrawlTek Revolution purchase! Follow us on facebook for up to date coverage of new product releases. We love feedback, if you have any questions about the installation or parts were missing please contact us at [sales-crawltek@ridefox.com](mailto:sales-crawltek@ridefox.com) or call us at 517.278.1039.*

*Be sure to show off your jeep to the rest of the CrawlTek Revolution online.  
Find us on facebook and instagram to keep up on new products, upcoming events and more action.  
Tag us @crawltek for a chance to get featured*

