



INSTALLATION INSTRUCTIONS

Product: Flex Joint Rebuild Tool Kit

Part Number: JKS1690

Applications:

TJ,XJ,ZJ Front Adjustable Track Bar OGS125, OGS126

FAB Adjustable Track Bar OGS951

Lower Adjustable Control Arms 1610, 1650, 1660

Upper Adjustable Control Arms 1615, 1665

877-533-7557 • jks@sporttruckusainc.com • www.jksmfg.com
491 W. Garfield Avenue, Coldwater, MI 49036

Welcome

CONGRATULATIONS on purchasing the flex joint rebuild tool from JKS Manufacturing. We are committed to providing you with the best products available and your satisfaction is our first priority.

PLEASE READ these Installation Instructions carefully, and save them for future reference, as they contain important installation and maintenance information.

Important

Fits all flex ends that use either a 1-3/8" ID retaining washer or a 1-1/16" ID retaining washer. Will not be compatible if the retaining washers do not meet either of these specifications.

Tools Required

- 5/16", 5/8", 11/16", and two 3/4" wrenches
- Internal snap ring pliers
- Grease gun
- Non-petroleum based grease

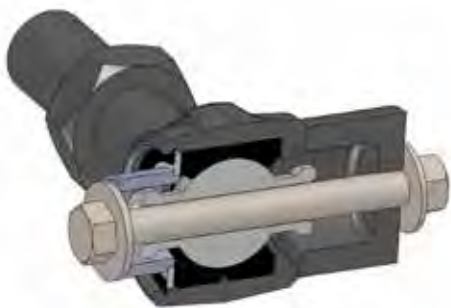


Parts

	Description	QTY
A	Large flex eye tool	1
B	Small flex eye tool	1
C	Press Cup	1
D	1/2"-13 x 5" bolt	1
E	1/2"-13 hex nut	1
F	7/16"-14 x 4-1/2" bolt	1
G	7/16"-14 hex nut	1
H	7/16" USS flat washer	2
I	1/2" USS flat washer	1

Installation

❑ 1. ASSEMBLE TOOL TO FLEX EYE



- Place the large nylon cup on the end that will not have the snap ring removed with the cupped end towards the flex eye as shown.
- Place the appropriately sized machined tube into the washer on the side that will have the snap ring removed.

The large machined tube is designed for 1-3/8" ID washers.

The small machined tube is designed for 1-1/16" ID washers.

- Using the appropriate hardware, hand tighten the bolt and square the flex eye removal tool to the eye.

7/16" hardware is designed for small flex eye.

1/2" hardware is designed for large flex eye.

❑ 2. FLEX EYE DISASSEMBLY

- Tighten with wrenches (avoid using an impact wrench) to compress the bushings enough to relieve pressure on the snap ring to allow for removal.
- Using snap ring pliers, compress the snap ring and remove it from the flex eye.
- Remove the bushings and retaining washers from the eye.

Note: On some track bar applications it may be necessary to remove the grease fitting to allow for bushing removal.

❑ 3. FLEX EYE ASSEMBLY

- Re-install the bushings and washer(s) back into the flex eye in reverse of disassembly.
- Assemble the tool to the eye using the same process shown previously.
- Tighten the bolt until the snap ring can be installed in the groove.
- Using snap ring pliers, install the snap ring. Verify it is fully seated.
- Loosen the bolt and remove the tool from the eye.
- Grease bushings using a grease gun and non petroleum based grease.

If you encounter any problems with your installation and setup, please contact JKS Manufacturing for technical assistance.

JKS Technical Support

Phone	517-278-1226
E-Mail	jks@sporttruckusainc.com

©2016 JKS Manufacturing Revision Date 5/12/2016