



## #C9908 Installation Instructions 1999-2007CL Chevy/GM 1500 Pickup 2/4wd 1.5" Rear Bumper Bracket Kit

### Read and understand all instructions and warnings prior to installation of product and operation of vehicle.

Zone Offroad Products recommends this system be installed by a professional technician. In addition to these instructions, professional knowledge of disassembly/ reassembly procedures and post installation checks must be known. Minimum tool requirements include the following: Assorted metric and standard wrenches, hammer, hydraulic floor jack and a set of jack stands. See the "Special Tools Required" section for additional tools needed to complete this installation properly and safely.

#### » PRODUCT SAFETY WARNING

Certain Zone Suspension Products are intended to improve off-road performance. Modifying your vehicle for off-road use may result in the vehicle handling differently than a factory equipped vehicle. Extreme care must be used to prevent loss of control or vehicle rollover. Failure to drive your modified vehicle safely may result in serious injury or death. Zone Offroad Products does not recommend the combined use of suspension lifts, body lifts, or other lifting devices.

You should never operate your modified vehicle under the influence of alcohol or drugs. Always drive your modified vehicle at reduced speeds to ensure your ability to control your vehicle under all driving conditions. Always wear your seat belt.

#### » TECHNICAL SUPPORT

*Live Chat* provides instant communication with Zone tech support. Anyone can access live chat through a link on [www.zoneoffroad.com](http://www.zoneoffroad.com).

[www.zoneoffroad.com](http://www.zoneoffroad.com) may have additional information about this product including the latest instructions, videos, photos, etc.

Send an e-mail to [tech@zoneoffroad.com](mailto:tech@zoneoffroad.com) detailing your issue for a quick response.

**888.998.ZONE** Call to speak directly with Zone tech support.

#### Difficulty Level

easy (1) 2 3 4 5 difficult

Estimated installation: 1 hour

#### Special Tools Required

none

#### » PRE-INSTALLATION NOTES

1. Special literature required: OE Service Manual for model/year of vehicle. Refer to manual for proper disassembly/reassembly procedures of OE and related components.
2. Adhere to recommendations when replacement fasteners, retainers and keepers are called out in the OE manual.
3. Larger rim and tire combinations may increase leverage on suspension, steering, and related components. When selecting combinations larger than OE, consider the additional stress you could be inducing on the OE and related components.
4. Post suspension system vehicles may experience drive line vibrations. Angles may require tuning, slider on shaft may require replacement, shafts may need to be lengthened or trued, and U-joints may need to be replaced.
5. Secure and properly block vehicle prior to installation of Zone Offroad Products. Always wear safety glasses when using power tools.
6. If installation is to be performed without a hoist, Zone Offroad Products recommends rear alterations first.
7. Due to payload options and initial ride height variances, the amount of lift is a base figure. Final ride height dimensions may vary in accordance to original vehicle attitude. Always measure the attitude prior to beginning installation.

rev060313

## Kit Contents

Qty	Part
2	Bumper Bracket
2	Receiver Spacer
1	Bolt Pack



*THIS BUMPER MOUNT KIT IS DESIGNED FOR USE WITH ZONE OFFROAD 1.5" BODY LIFT KITS #C9152, C9153 AND C9154 OR COMBO KITS #C1352, C1353 AND C1354. PERFORM THIS KIT INSTALLATION AFTER THE BODY LIFT OR COMBO KIT IS INSTALLED IN THE VEHICLE.*

### » INSTALLATION INSTRUCTIONS

1. Disconnect the license plate lights from the bumper Figure 1 and the license plate wiring harness from the retaining clips Figure 2.

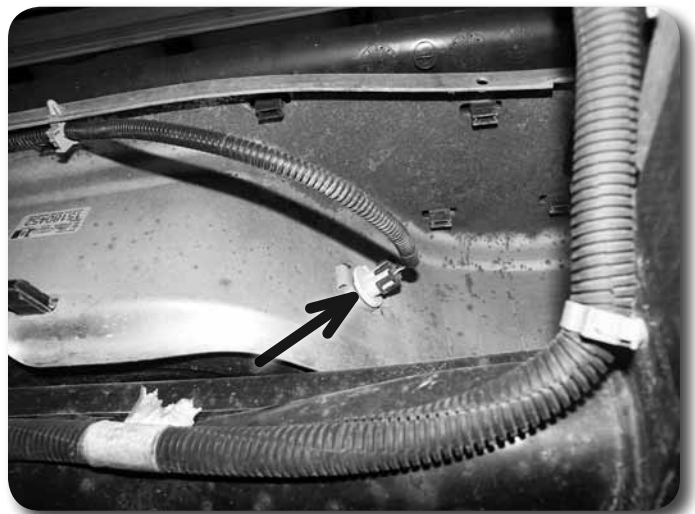


Figure 1



Figure 2

2. If equipped, remove the two bolts mounting the rear bumper to the receiver hitch **Figure 3**.
3. Support the bumper so that it will not fall when the mounting hardware is removed.

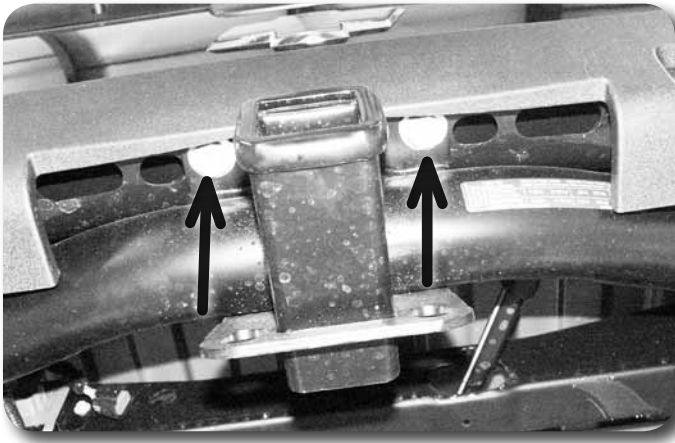


Figure 3

4. Remove the 4 bolts (8 total) mounting the rear bumper to the frame rails. 3 are accessed from the side of the frame **Figure 4A** and one up through the bottom **Figure 4B**. Remove the bumper from the vehicle. Save all hardware.

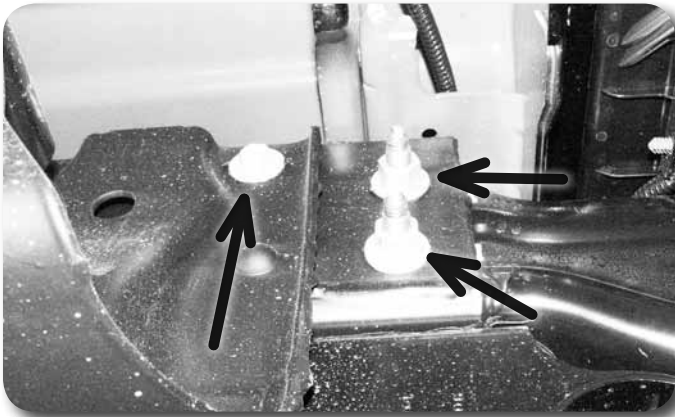


Figure 4A

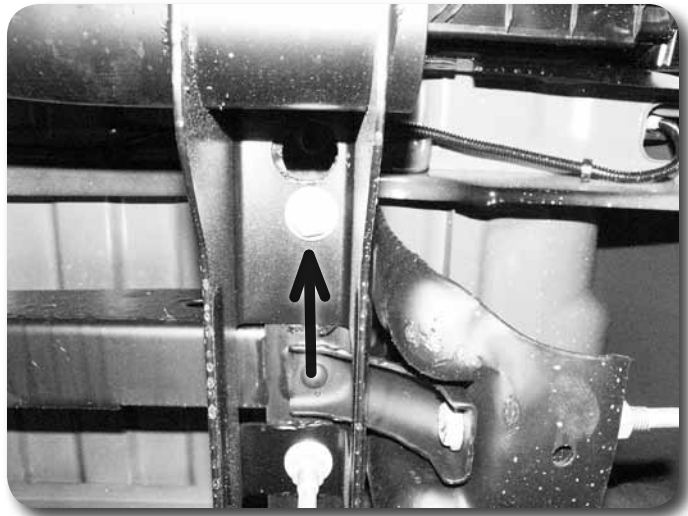


Figure 4B

5. Separate the bumper from the vehicle.
6. Loosen the hardware that secures the outside support brackets to the bumper.  
Figure 5



Figure 5

7. Remove the main factory bumper brackets from the bumper Figure 6A and replace them with the new provided brackets. Figure 6B Install the new bracket with the original hardware. Snug hardware, leaving the bracket free enough to adjust once on the vehicle.



Figure 6A



Figure 6B

8. If equipped with a receiver hitch: Fasten the receiver hitch to the bottom of the frame rails through the rear-most holes using the provided 5/8" x 1-1/2" bolts, nuts and 5/8" USS washers. **Figure 7** Torque bolts to 100 ft-lbs.



Figure 7

9. Locate the small tab where the spare tire winch guide tube runs through the frame. **Figure 8A** The tab must be either bent up or cut off flush with the top of the hole in the frame. **Figure 8B** This will provide clearance for the guide tube to run in a slightly higher position.



Figure 8A

### **Step 9 Note**

1999-2000 models have a different spare tire carrier/frame crossmember. With the rear bumper relocated the spare tire winch crank tube will not align/function properly. Remove the spare tire and relocate it to the bed of the truck.



Figure 8B

10. Install the rear bumper on the vehicle **Figure 9**. Be sure the new brackets are inside the frame rails and the spare tire winch tubes align **Figure 10**. Fasten the bumper to the original frame mount holes with the factory bolt tab and nuts. Swing the outer support bracket in to the frame and fasten to the factory upper frame hole through the lower support bracket hole. Fasten the bracket through the remaining front-upper hole **Arrow - Figure 9** with the original 10mm bolt and provided 10mm nut and washer. Leave hardware loose.



Figure 9



Figure 10

11. If equipped with a receiver hitch, install the provided spacers between the hitch and the bumper. **Figure 11** Fasten the bumper to the hitch with 14mm x 80mm bolts and 9/16" SAE washers. Leave loose.

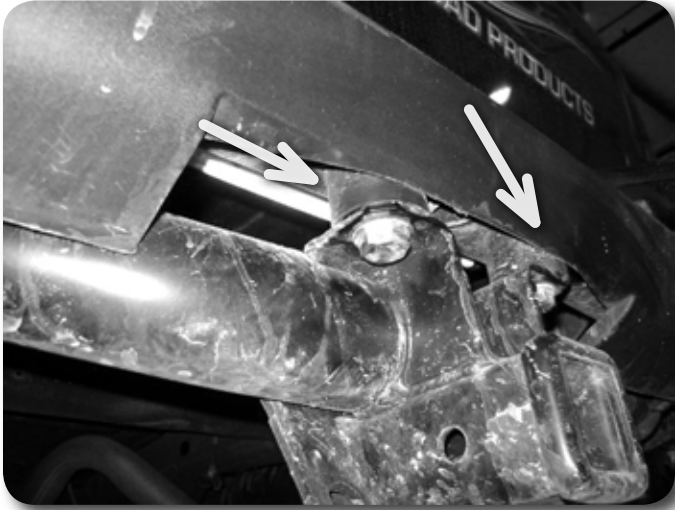


Figure 11

12. Adjust bumper position and tighten all bumper mounting hardware starting with the bumper-to-bracket hardware first. Torque the hardware to the following specs: Factory 12mm bumper hardware – 65 ft-lbs, 14mm hardware – 95 ft-lbs, and 10mm hardware – 40 ft-lbs.
13. Reconnect all bumper wiring.

## **Post-Installation**

1. Check all hardware for proper torque.
2. Check hardware after 500 miles.